

AUTHORISED DISTRIBUTOR



A British Lubricants Company

Trust Brit-Lube Specialist Lubricants
A Family owned International Brand!



Series

MSP60/MSP125/MSP250/MSP500

More Reliable. More Efficient. More Precise.
Machine Synchronized & Externally Powered.



Pulsarlube **MSP**

Features & Advantages

Synchronized Lubrication

A pre-set amount of grease is delivered only when the equipment is in operation, avoiding the possibility of over lubrication and waste

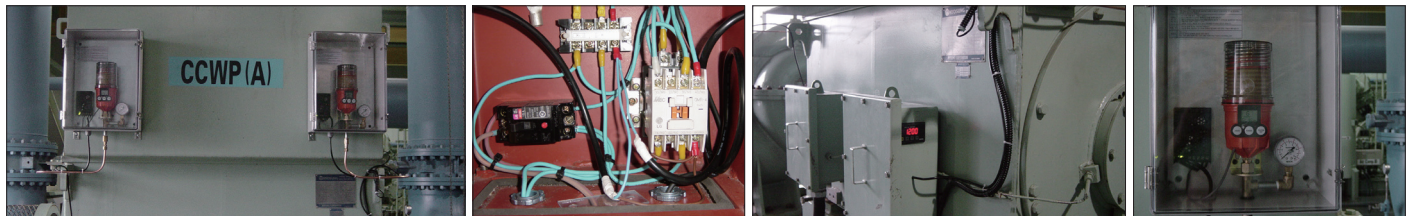
Cost Savings

- ▶ There is no need to replace the battery pack for up to 5 years
- ▶ Substantial savings from the use of replaceable grease pouches and battery packs (Service Pack)
- ▶ Perfect solution to prolong machinery life by preventing under or over-lubrication and optimize maintenance efficiency

Other Features

- ▶ Various dispensing settings & grease pouch volumes to suit a wide range of industrial applications
- ▶ Easy to adjust dispensing periods, even while in operation
- ▶ Transparent container for easy visual inspection of remaining lubricant

Typical Industries and Applications



- Motors & pumps
- Equipment that is shut down or in stand-by for long periods of time
- Electronics & automobiles
- Cleanrooms where over-lubrication is critically monitored

Product Specifications

Grease Pouch Capacity

60ml / 500ml (pre-set)
125ml / 250ml (capacity setting available)

Power Supply

External Power Supply (*Backup Battery Required)

- 1) VAC
AC-DC ADAPTOR (100 ~ 220V)
- 2) VDC
DC-DC CONVERTOR (12V ~ 24V)

Operating Pressure

30 ~ 60bar (435 ~ 870psi)

Operating Temperature

Standard Alkaline Battery :
-15°C ~ 60°C (5°F ~ 140°F)
Optional Lithium Battery :
-40°C ~ 60°C (-40°F ~ 140°F)

Dispensing Periods

60ml : 1 ~ 12 month
125ml / 250ml : 1, 2, 3, 6, 12 month & H (15 days)
500ml : 1, 2, 4, 6, 12, 18, 24 month & H (15 days)

* MSP is also available for oil applications

Single Point Remote Installation

Max. 10m (33ft) with Ø6 tube

Multi-Point Installation

Max. 6m (20ft) with Ø6 tube
(Up to 8 Lube points)

Dispensing Volume Size

0.34ml/stroke (@20°C/68°F)

Voltage Rate Input Range

VAC : 100 ~ 220V, 0.5A 50 ~ 60Hz
VDC : 12V ~ 24V

Relay Specifications

Voltage Rate Output Range

5.0V, 2A

Power ON Indicator

Red LED

Power Supply Dimensions

85 mm (D) x 49 mm (W) x 32 mm (H)

Wire Length From Power Supply

Input : 1m (3.3ft) Output : 4.5m (15ft)

Wire Length From MSP Lubricator

90mm (3.5in)



A British Lubricants Company